

OHS alert!

December 2011

Check those braces...

OHS requirements are very clear on the bracing of precast concrete panels.

*'...Braces **MUST** be maintained and inspected between each use to ensure that all components are correct and in good working order...'*

Clause 8.17 'Temporary Bracing', **Victorian Industry Standard for Precast and Tilt-up Concrete for Buildings**

*'...Before installation, **WRITTEN PROOF** of the inspection after the last use of the brace is required...'*

Clause 7.7.2 of **The National Code of Practice for Precast, Tilt-up and Concrete Elements in Building and Construction**

The reason?

Like any piece of plant and equipment, temporary braces are only as good as their maintenance regime.

Lives depend upon the equipment we work with. Unfortunately, it is common to find braces that are not in good working order being used on site. Often maintenance and inspection of braces cannot be proven.

Workers do not have to play a game of chance with their safety and hope that the braces are OK! Concrete panels and suspect braces are NOT OK!

All braces must have a permanently fixed and readable ID plate, which states, among other things, the working load limit of the brace and its capacity at maximum and minimum extension.

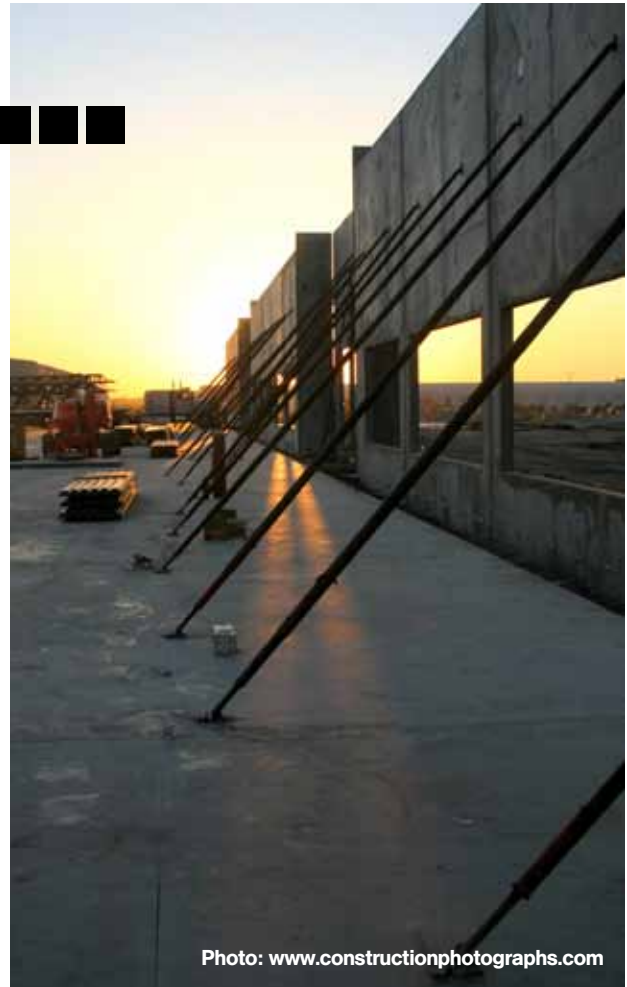


Photo: www.constructionphotographs.com

Because braces are part of a 'propriety system', grabbing a bolt on site to fill in for the correct pin is just not on.

Make sure that the braces you're using are in good, safe working order. If there is any doubt at all – don't use them!

Speak up for your mates – speak up for safety!

Tell your CFMEU OHS Rep or contact the Union if you have any concerns.

SAFETY IS UNION BUSINESS